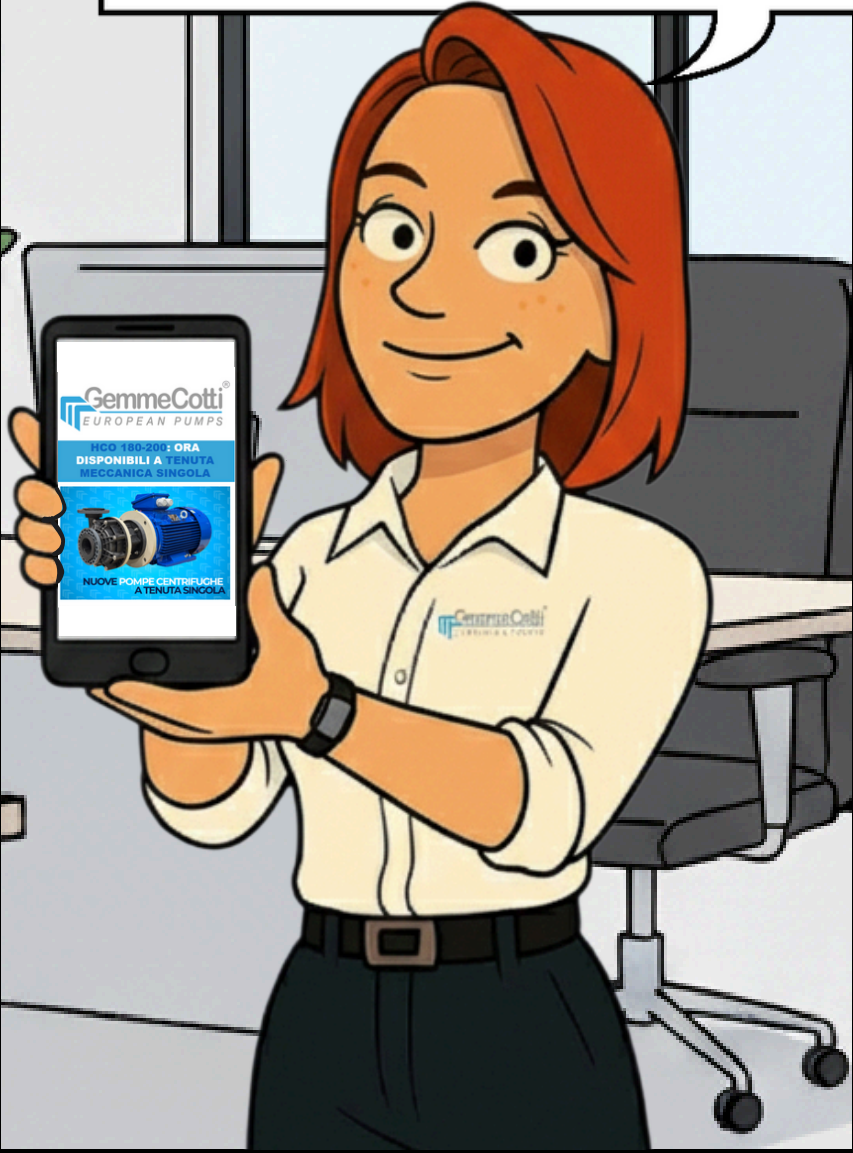


MARK & ROCK

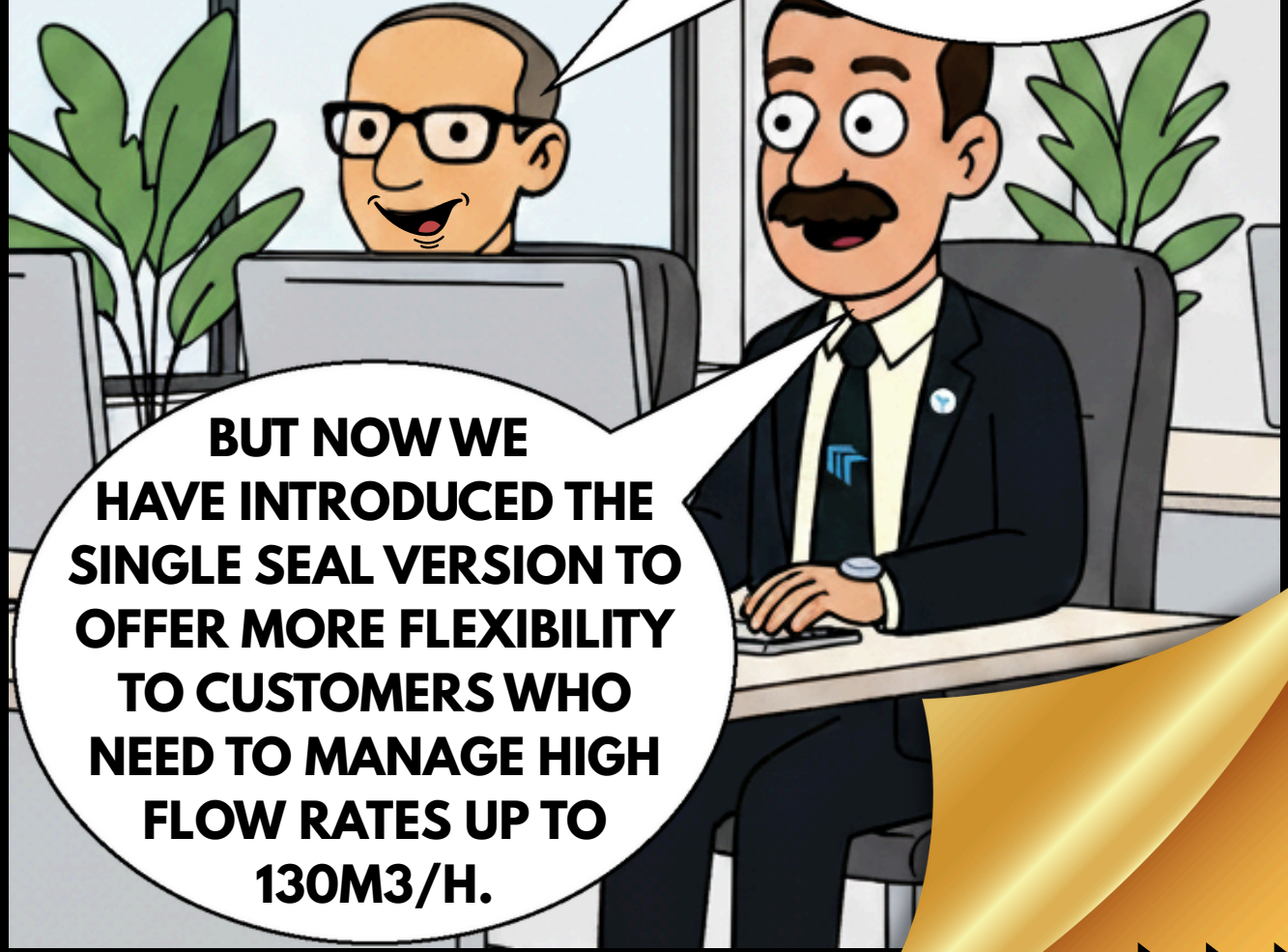
HCO SINGLE MECHANICAL SEAL VS DOUBLE MECHANICAL SEAL



HI MARK, HI ROCK! I READ THE NEWSLETTER ABOUT THE NEW HCO 180 AND 200 CENTRIFUGAL PUMPS IN PP AND PVDF. IT SAYS THEY ARE NOW ALSO AVAILABLE WITH A SINGLE MECHANICAL SEAL.



CORRECT, FEDERICA! PREVIOUSLY, THE HCO 180 AND 200 MECHANICAL SEAL PUMPS WERE ONLY AVAILABLE WITH A DOUBLE SEAL.



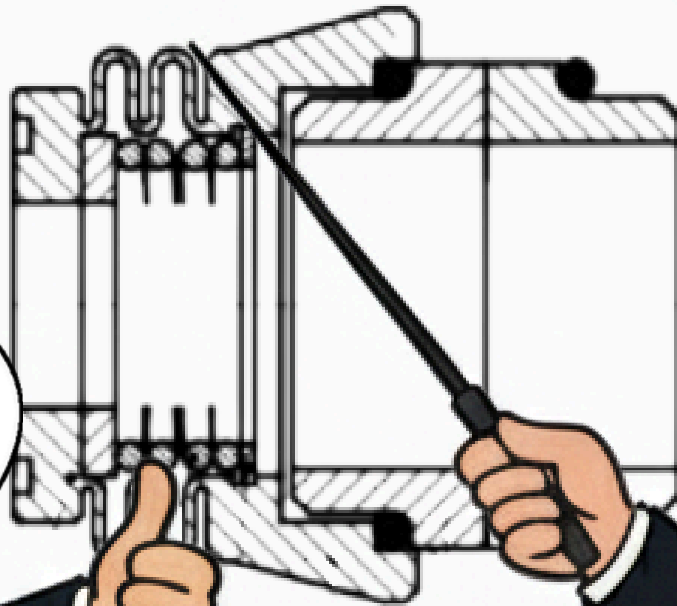
BUT NOW WE HAVE INTRODUCED THE SINGLE SEAL VERSION TO OFFER MORE FLEXIBILITY TO CUSTOMERS WHO NEED TO MANAGE HIGH FLOW RATES UP TO 130M3/H.



SINGLE SEAL

**EXACTLY!
THE SINGLE SEAL IS THE
IDEAL CHOICE WHEN YOU
NEED TO PUMP LARGE
VOLUMES OF ACIDS FOR
WHICH THE STANDARD
MECHANICAL SEAL IS
ADEQUATE.**

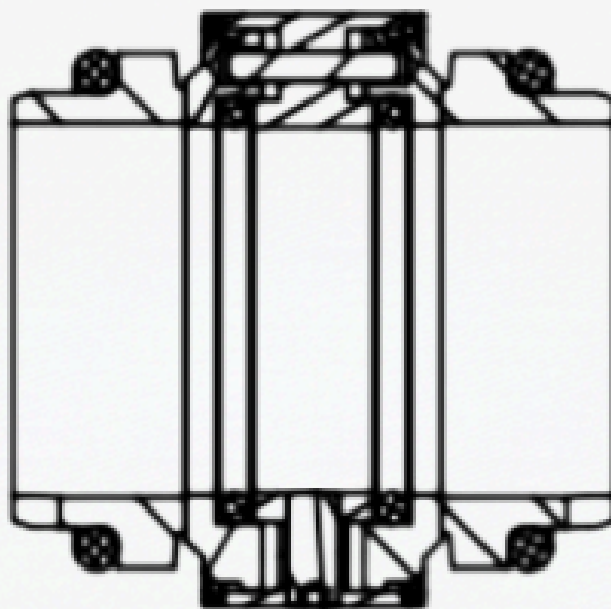
**IT IS A SIMPLER
AND MORE
ECONOMICAL SOLUTION
FOR MANY INDUSTRIAL
APPLICATIONS IN PP
AND PVDF.**



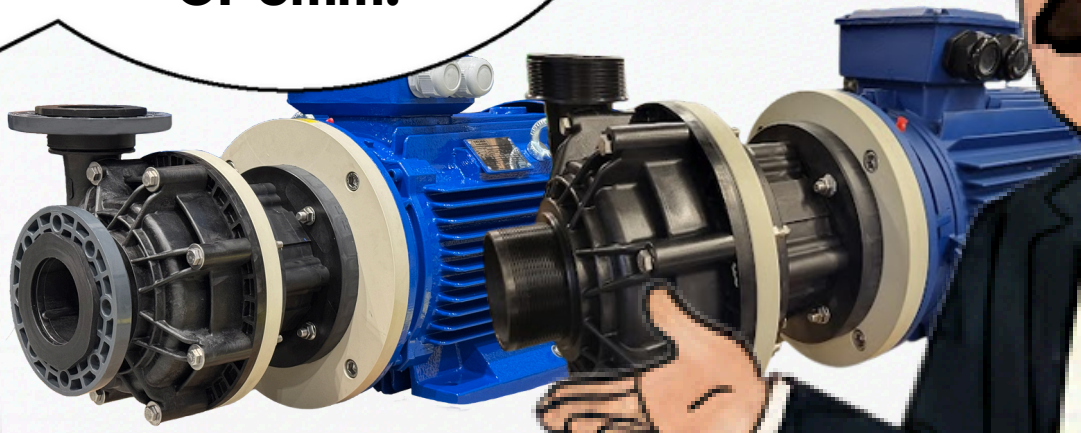
**HOWEVER,
FOR MORE CRITICAL
APPLICATIONS, WE
CONTINUE TO OFFER THE
DOUBLE BACK-TO-BACK
SEAL, OR OUR MAGNETIC
DRIVE PUMPS.**

DOUBLE SEAL

**THESE SYSTEMS
ARE USED WHEN
THE LIQUID IS DANGEROUS,
CRYSTALLIZES, OR
REQUIRES AN EXTRA
SAFETY BARRIER WITH
A FLUSHING LIQUID.**



**SO:
SINGLE SEAL FOR
LARGE FLOW RATES OF
LIQUIDS WITH SOLIDS
CONTENT UP TO 5%
WITH A MAXIMUM SIZE
OF 3mm.**



**DOUBLE SEAL
FOR HARSHER
CONDITIONS
REQUIRING MAXIMUM
OPERATIONAL
SAFETY.**

**CONTACT
GEMMECOTTI TO FIND
THE PERFECT
CONFIGURATION FOR
YOUR PLANT!**

