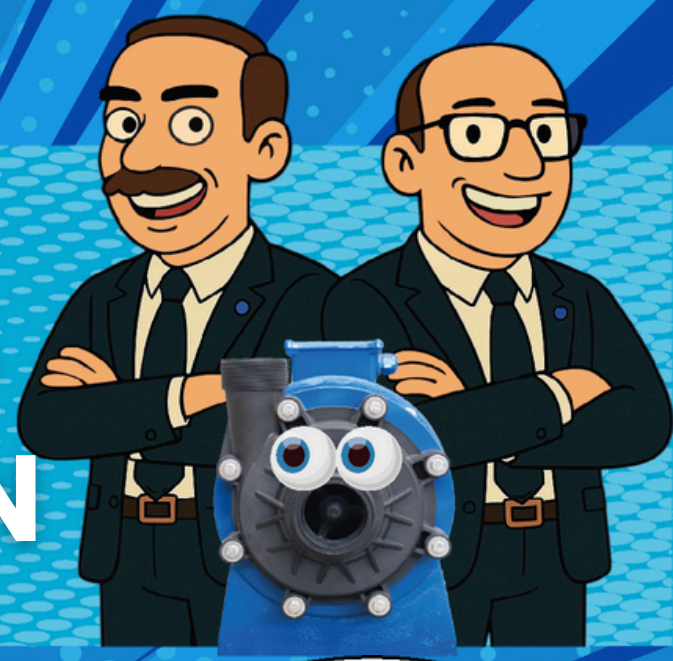
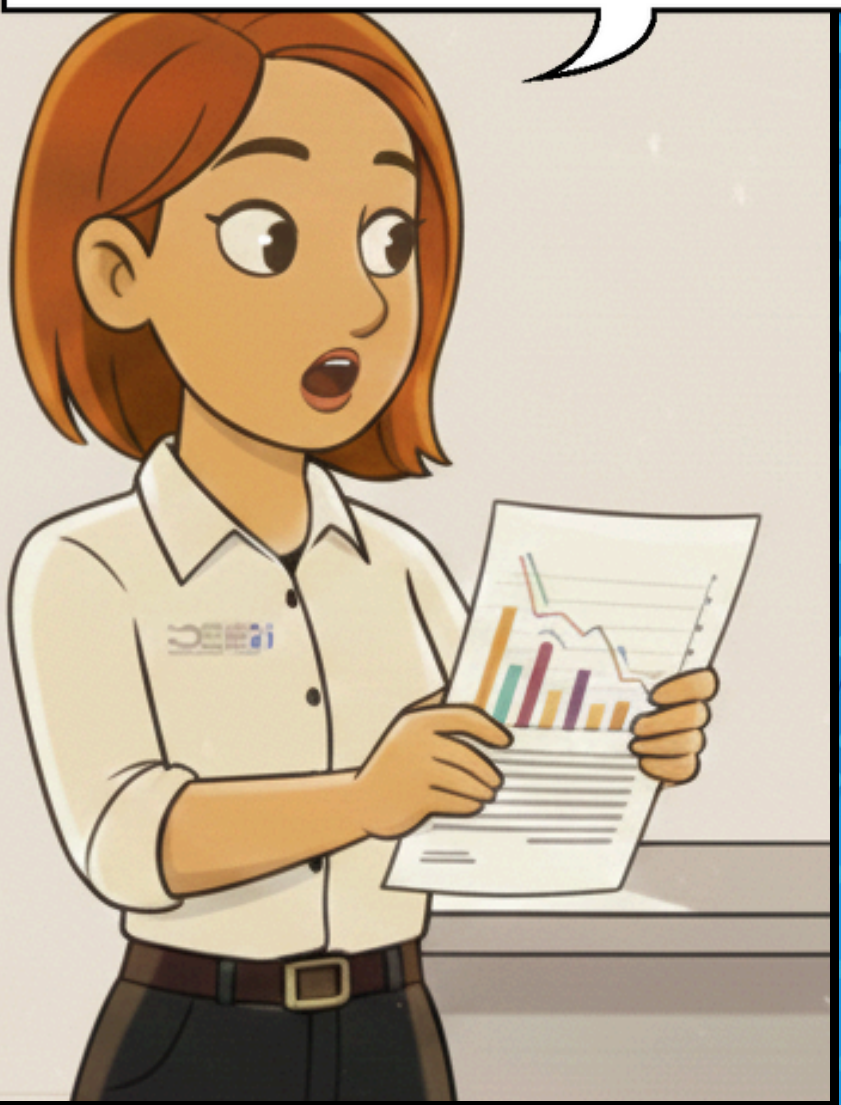


MARK & ROCK

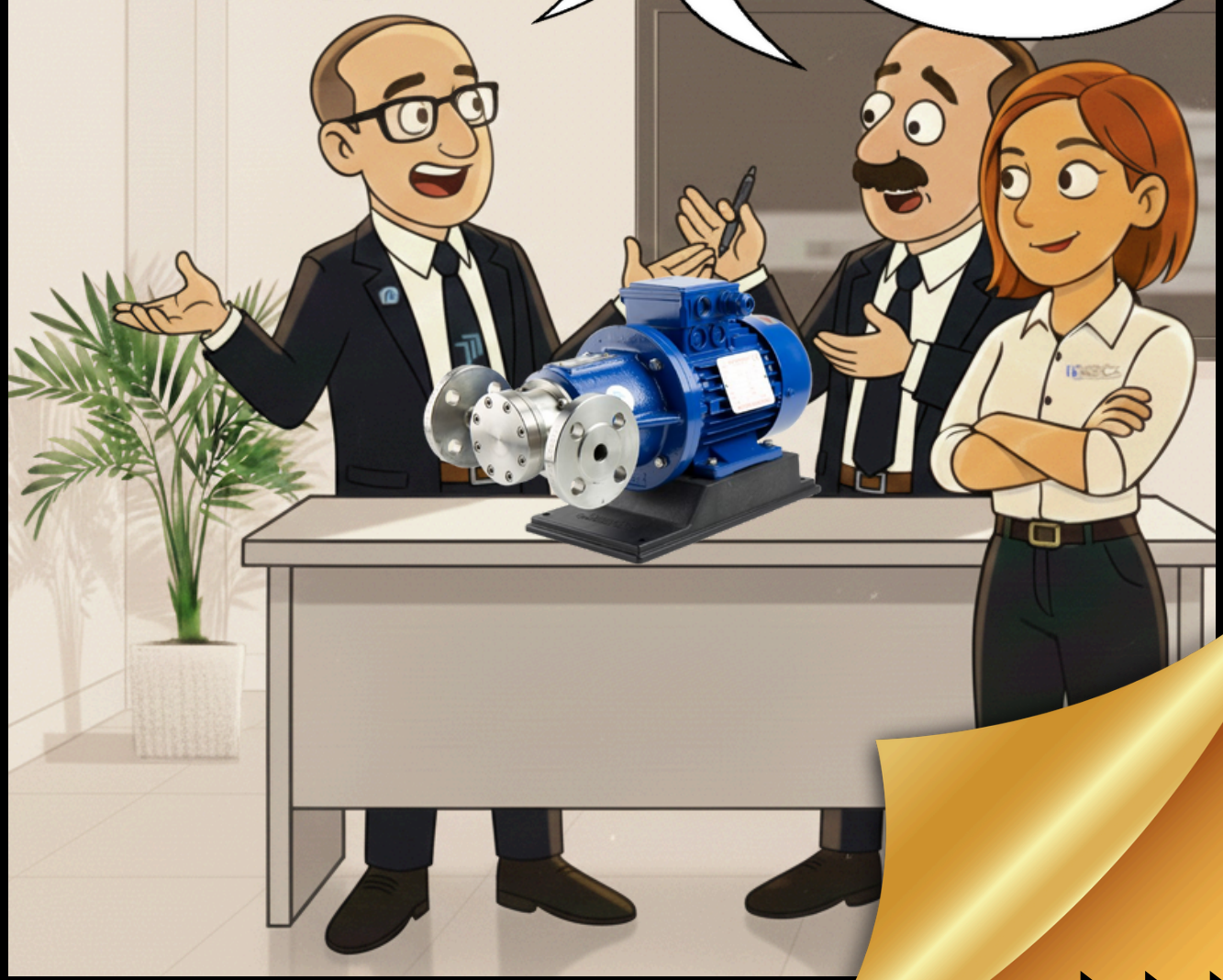
HOW TO INSTALL A PUMP IN A PERFECTLY HORIZONTAL POSITION



HI MARK AND ROCK! ONE OF OUR CUSTOMERS IS GOING TO INSTALL OUR HTP MAG DRIVE VANE PUMP IN A NEW PLANT. THEY WOULD LIKE TO HAVE A BASEPLATE TO FIX THE PUMP TO THE GROUND.

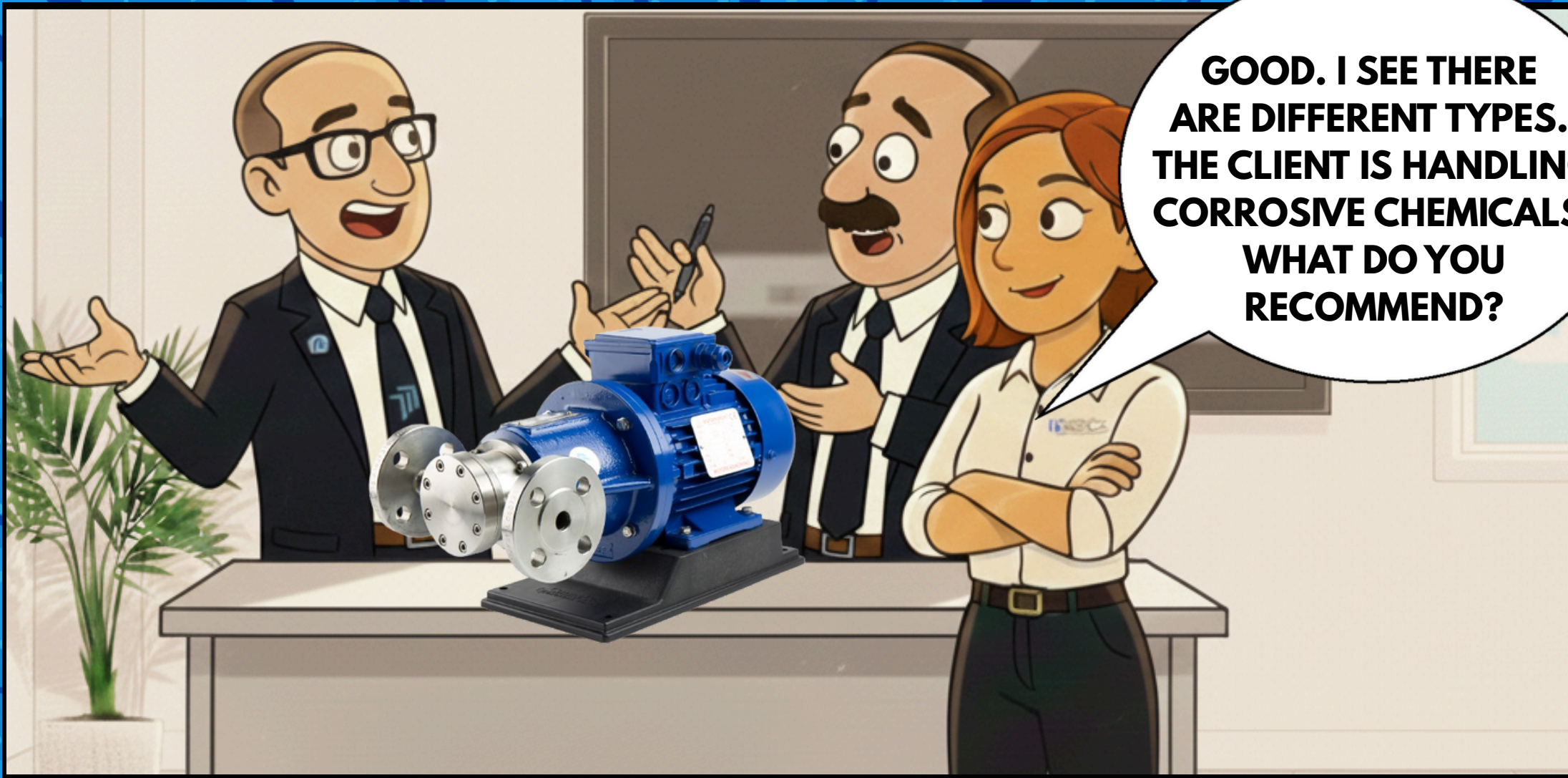


A CORRECT INSTALLATION IS THE KEY TO A LONG, RELIABLE PUMP LIFE.

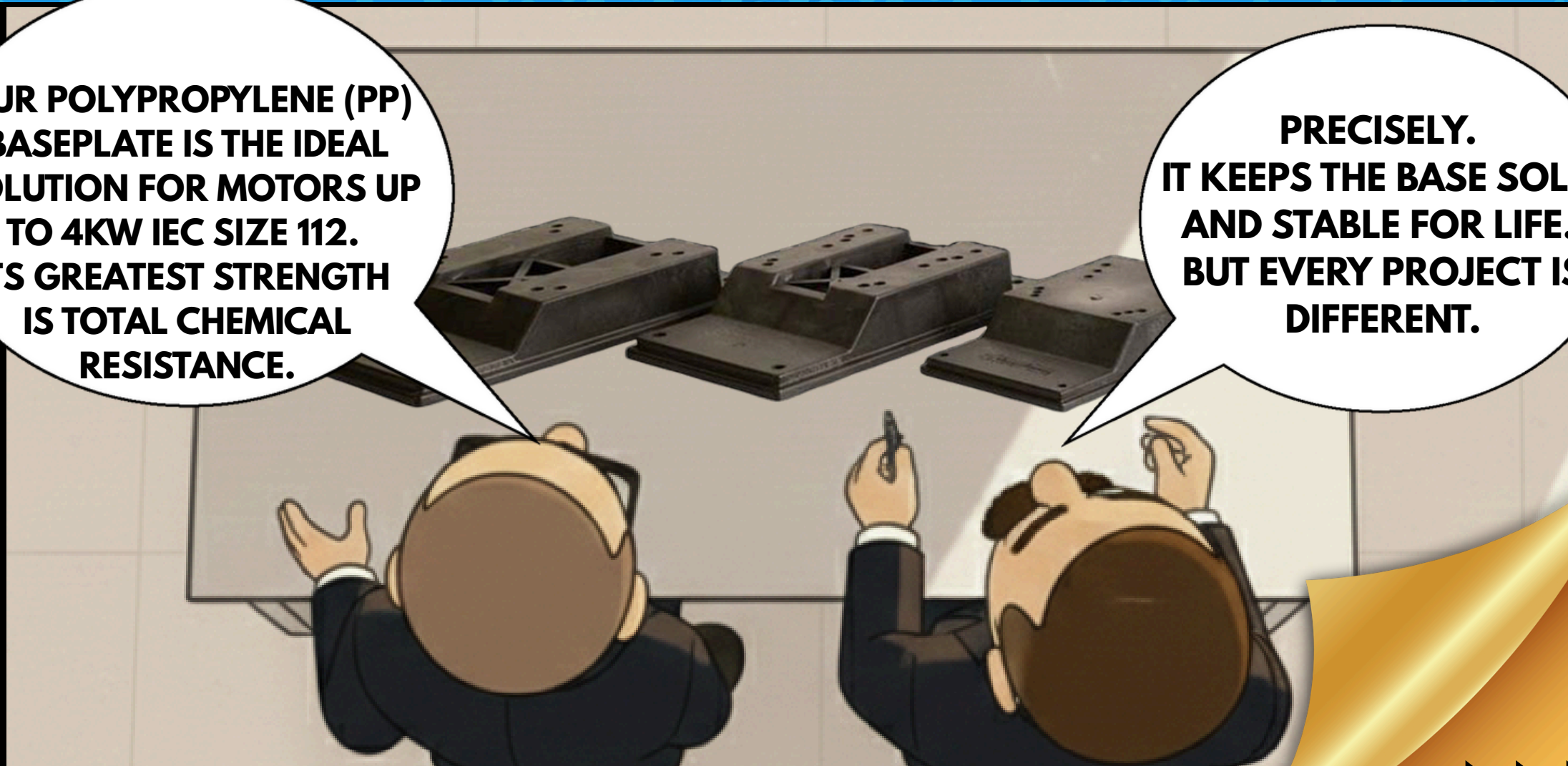


EXACTLY. THAT MEANS A SOLID BASE THAT GUARANTEES A PERFECTLY HORIZONTAL AND STEADY INSTALLATION.





GOOD. I SEE THERE ARE DIFFERENT TYPES. THE CLIENT IS HANDLING CORROSIVE CHEMICALS. WHAT DO YOU RECOMMEND?

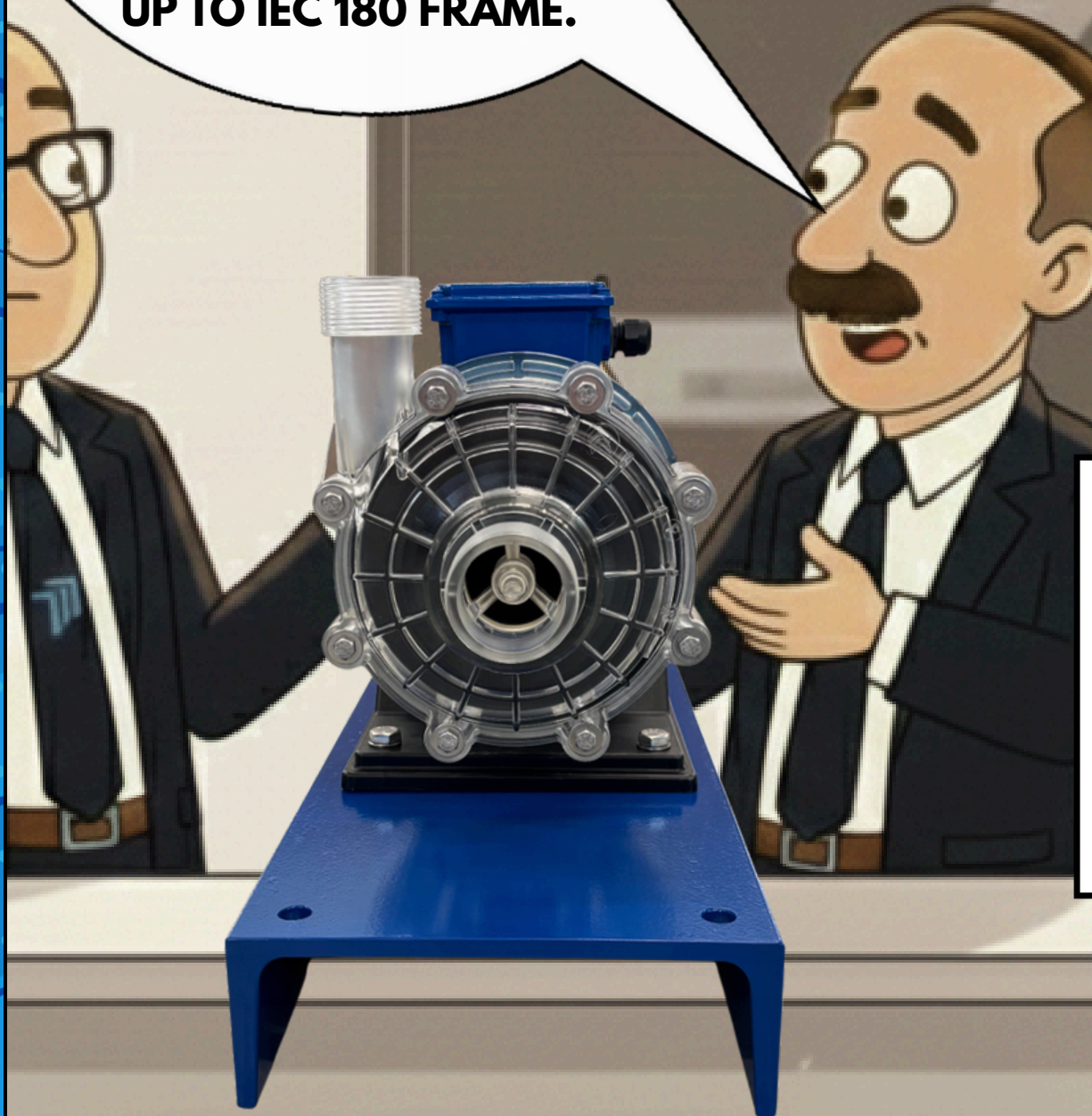


OUR POLYPROPYLENE (PP) BASEPLATE IS THE IDEAL SOLUTION FOR MOTORS UP TO 4KW IEC SIZE 112. ITS GREATEST STRENGTH IS TOTAL CHEMICAL RESISTANCE.

PRECISELY. IT KEEPS THE BASE SOLID AND STABLE FOR LIFE. BUT EVERY PROJECT IS DIFFERENT.



WE CAN ALSO OFFER UPN METAL BASEPLATES COMPLETE WITH ANCHOR BOLTS. THEY ARE VERY ROBUST AND ENSURE MAXIMUM STABILITY. THEY CAN BE INSTALLED UNDER PUMPS WITH MOTORS UP TO IEC 180 FRAME.



THE RIGHT BASEPLATE, PP OR METAL, MAKES ME FEEL STABLE AND SECURE. IT MEANS FEWER VIBRATIONS AND A LONG, HAPPY WORKING LIFE!

