

CHEMICAL PUMPS SINCE 1992



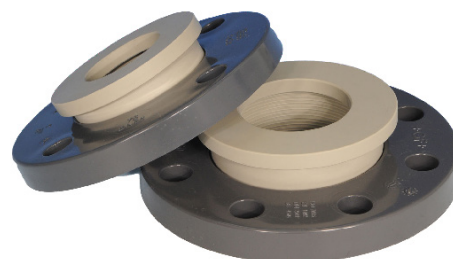
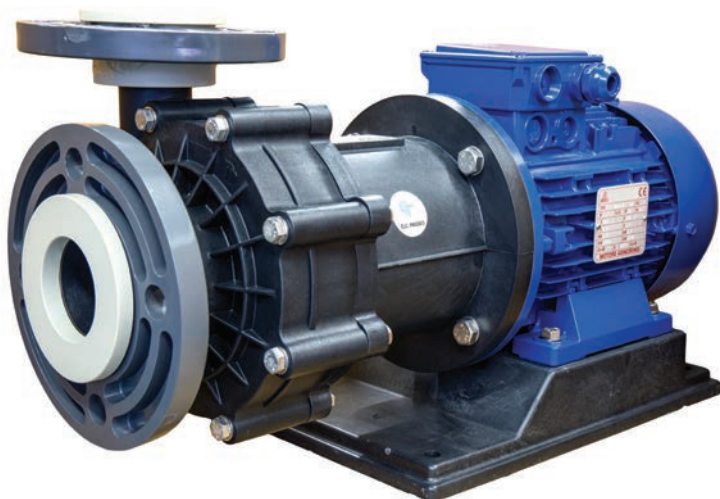
**GENERAL
CATALOGUE**

2025 | 2026



FLANGES

GemmeCotti pumps are usually supplied with **threaded connections**. Upon request we can also supply **DIN or ANSI flanges for thermoplastic pumps** (flat stub + free flange) and welded **DIN or ANSI flanges for AISI 316 pumps**.



WE AND RWE KIT OF SPARE PARTS

GemmeCotti provides WE (Wet end) and RWE (Rear wet end) **spare parts kits for mag drive pumps**. These kits include the spare parts in contact with the fluid.

You can contact the GemmeCotti sales team to find out the best spare parts kit suitable for your pump, your specific application and pump use.

For magnetic drive centrifugal pumps model HTM PP/PVDF (HTM 4 PP/PVDF, HTM 6 PP/PVDF, HTM 10 PP/PVDF, HTM 15 PP/PVDF, HTM 31 PP/PVDF, HTM 40 PP/PVDF, HTM 50 PP/PVDF, HTM 80 PP/PVDF and HTM 100 PP/PVDF) the kits include mainly:

WE SPARE PARTS KIT:

- Pump head
- O-ring
- Casing thrust bush
- Shaft & ring
- Impeller thrust bearing
- Impeller
- Internal magnet
- Bearing
- Rear casing



RWE SPARE PARTS KIT:

- O-ring
- Casing thrust bush
- Shaft & ring
- Impeller thrust bearing
- Impeller
- Internal magnet
- Bearing
- Rear casing





BASEPLATES

The pump complete with the motor can be installed perfectly horizontal thanks to our baseplates. GemmeCotti Baseplates for horizontal pumps are **made of PP (Polypropylene)** and they are **suitable for motors B3/B5 IEC and NEMA** from 0,12 kW to 4 kW. The baseplates are available in **three different dimensions** (type "A", type "B" and type "C").

MATERIAL

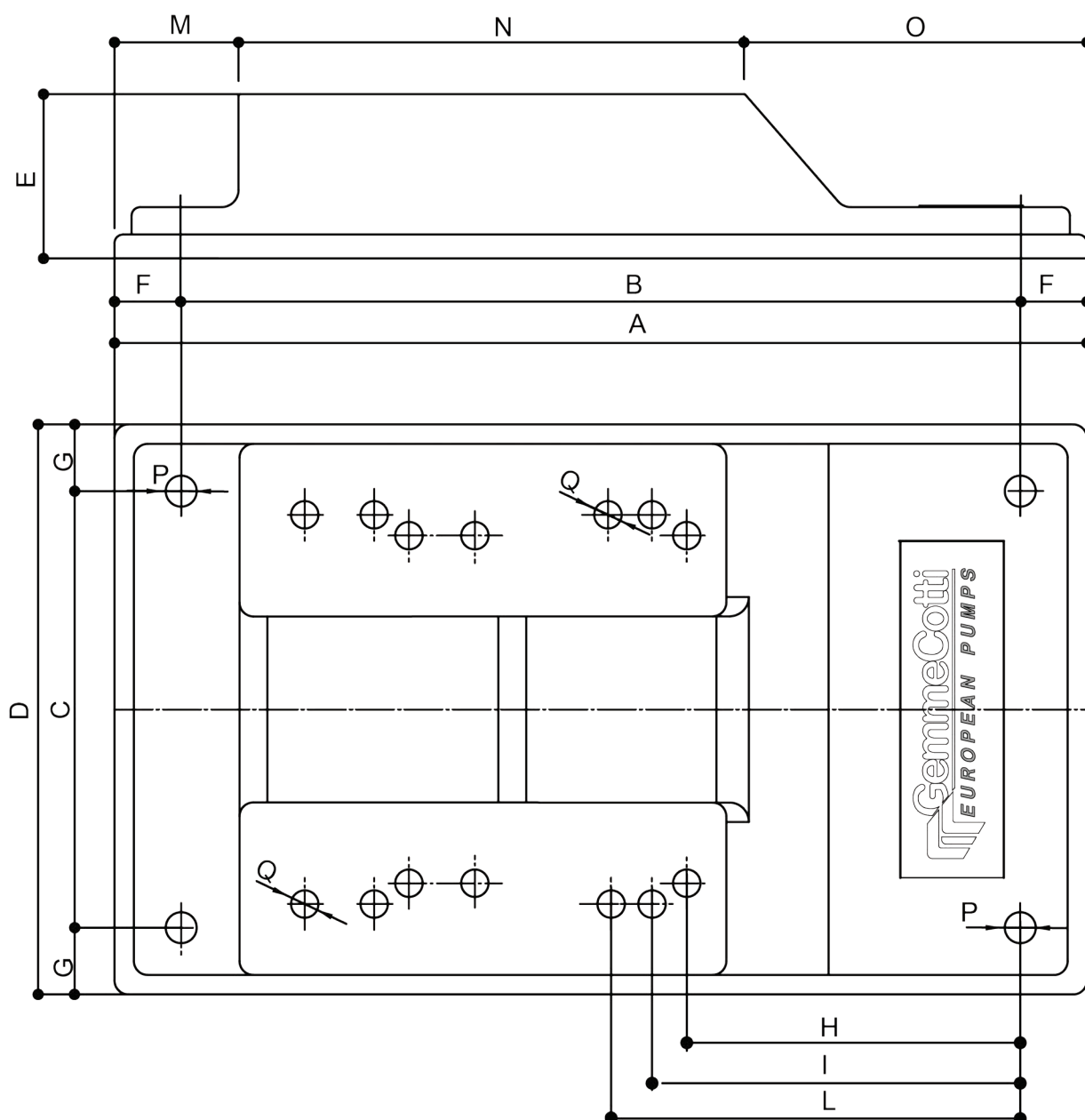
- PP

DIMENSION AVAILABLE

Available in three different dimensions:

- **BASEPLATE TYPE "A"** suitable for: IEC motors B3/B5 from size 56 to size 71
- **BASEPLATE TYPE "B"** suitable for: IEC motors from size 80 to size 90 and NEMA motors 56TC and 145T.
- **BASEPLATE TYPE "C"** suitable for: IEC motors from size 100 to size 112 and NEMA motors 184T.





TYPE	MOTOR	DIMENSIONS - mm -														
		A	B	C	D	E	F	G	H	I	L	M	N	O	P	Q
A	IEC-GR. 56 IEC-GR. 63 IEC-GR. 71	280	244	130	160	48	18	15	94	103	112	29	151	100	8	8
B	IEC-GR.80 IEC-GR.90 NEMA-GR.56TC NEMA-GR.145T	350	302	157	205	60	24	24	119	130	-	45	175	130	12	11
C	IEC-GR.100 IEC-GR.112 NEMA-GR.184T	400	352	202	250	60	24	24	140	156	-	45	210	145	12	12



METALLIC UPN BASEPLATES

GemmeCotti can supply **UPN baseplates** as an optional for our **chemical horizontal pumps**, both magnetic drive (PP/PVDF/AISI 316) and mechanical seal (PP/PVDF).

Each pump model has a **specific baseplate configuration**. We offer four configurations, optimized for different pump types, to ensure best performance and structural fastening.

MAIN FEATURES

- **Support and stability:** UPN baseplates ensure that the pump is securely fixed.
- **Resistance:** UPN steel is known for its robustness, making these bases suitable for supporting heavy pumps and withstanding mechanical stress.
- **Durability:** Painted steel baseplate offers high corrosion resistance, ensuring a long lifespan of the base even in harsh environments
- **Versatility:** UPN baseplates can be designed and manufactured to adapt to different sizes and types of pumps.



DRY-RUNNING PROTECTION DEVICE

To prevent damages to the pumps due to the lack of liquid, GemmeCotti supplies the dry-running protection device. This device **avoids the dry running, the closed discharge and the blocked suction**. Thanks to the adjustable threshold and timer, it is possible to set up the minimum power and operation time of the device. If the power is lower than the set value, the pump will automatically stop. This device is particularly **recommended during the operations of tanker unloading and for all the applications in which there is the risk of liquid shortage**.

MAIN FEATURES

- Single Phase CURRENT RELAY
- Multirange 15-35A
- 2 set points MAX / min
- Also for motors with INVERTER



PT 100 THERMOPROBE

For pumps installed in ATEX zone 1 II 2G areas, GemmeCotti can offer the **PT 100 thermoprobe**, a high-precision temperature sensor specifically designed for accurate monitoring of mag-drive pump operating temperatures.



DIAPHRAGM SEAL PRESSURE GAUGE

GemmeCotti offers **diaphragm seal pressure gauges** in **Polypropylene** and **PVDF**, designed to protect pressure measuring instruments from harsh process conditions.



SUCTION STRAINER

GemmeCotti can supply **suction strainers** as an accessory for vertical pumps. The suction strainer has a **length of 200mm** and can be tightened to the pump suction port.

Suction strainers protect pumps from contamination trapping coarse impurities and they prevent solids present in the liquid or at the bottom of the tank or sump from entering the pump.



BOLTS AND NUTS

GemmeCotti also supplies a variety of **bolts and nuts**:

- **Bolts and nuts M16x110**
Max tightening torque: 15 Nm
Material: PVDF
- **Bolts and nuts M12x50**
Max tightening torque: 7 Nm
Material: PVDF
- **Bolts and nuts M10x25**
Max tightening torque: 4.5 Nm
Material: PVDF





GEMMECOTTI SRL

Via Po 23-25-27
20031 Cesate MILANO | ITALY
EUROPEAN UNION

Ph: +39 02.96460406
info@gemmecotti.com



www.gemmecotti.com

