

CHEMICAL PUMPS SINCE 1992



**GENERAL
CATALOGUE**

2025 | 2026



ATEX PUMPS

AISI 316

ZONE 1/2



For applications in potentially explosive atmospheres, **GemmeCotti offers ATEX certified pumps**. ATEX pumps made of **metallic material AISI 316** are suitable to be used in **potentially explosive atmospheres classified zone 1 II 2G c Tx and zone 2 II 3G c Tx**.

All our ATEX pumps comply with the technical and safety requirements of ATEX Directive 2014/34/EU.



Pump model **EM-T made of AISI 316** - for **ATEX zone 1 and 2** (See pump model HTA page 32)



- Metallic pumps made in stainless steel AISI 316.
- Capacity up to 7 m³/h.
- Head up to 76 mlc.

Pump model **EM-C made of AISI 316** – for **ATEX zone 1 and 2** (See pump model HTM SS316 page 24)



- Metallic pumps made in stainless steel AISI 316.
- Capacity up to 32 m³/h.
- Head up to 24 mlc.

Pump model **EM-P made of AISI 316** for **ATEX zone 1 and 2** (See pump model HTP page 38)



- Metallic pumps made in stainless steel AISI 316.
- Capacity up to 2100 L/h.
- Pressure up to 13 bar.
- Dry self-priming.

METALLIC MAG-DRIVE REGENERATIVE TURBINE PUMPS



STANDARD

- Static shaft in HC 276.
- Chemical resistant PTFE/Carbon sleeve bearings standard.
- High torque magnetic coupling.
- Direct starting motors.

OPTIONAL

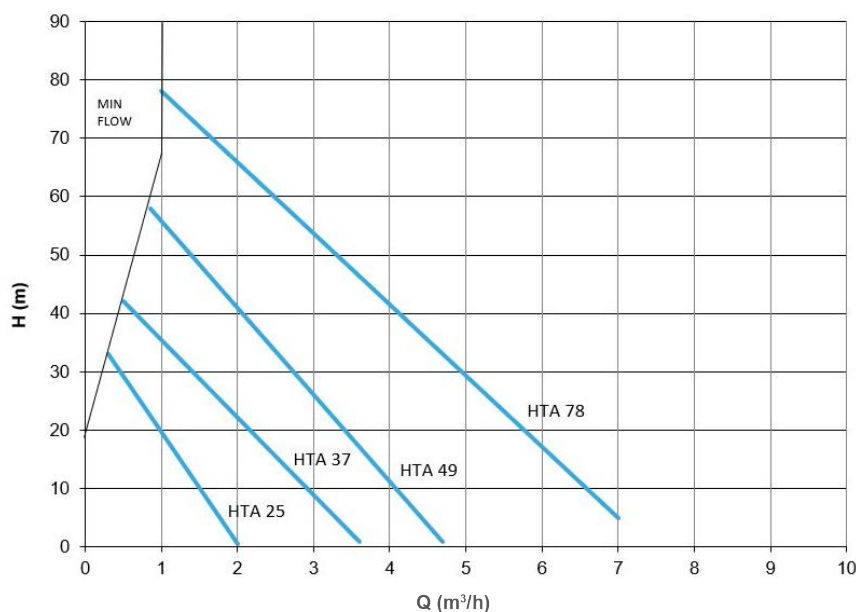
- DIN or ANSI flanges available.
- Explosion proof motor.
- Dry-running protection device.
- Baseplate.
- Available in ATEX version for zone 1 II2G and zone 2 II 3G (pump mod. EM-T AISI 316).

Mag drive regenerative turbine pumps series HTA are made of AISI 316 and are suitable for solvents, hydrocarbons, dangerous and inflammable liquids. Thanks to the innovative mag drive system, pumps model HTA **reduce the risks of leakage and emissions and maintenance costs**. The transmission of the motion occurs through magnetic joints without any mechanical seal. This design guarantees the maximum **hermetic safety and efficiency**. The pumped liquid has to be clean and without solids in suspension. Pumps series HTA are also available in **ATEX version for zone 1 and 2** (pump model EM-T AISI 316).

MAIN FEATURES

- **High head / low flow capability** minimizes by-pass requirements.
 - **Materials available:** AISI 316.
 - **Materials in contact with the liquid:** casing and impeller: stainless steel AISI 316; o-ring EPDM/VITON; bushing: PTFEC; shaft: Hastelloy C276.
 - **Max flow** 7 m³/h; **Max head:** 76 m.c.
 - **Max temperature:** 160°C.
 - **Max viscosity:** 45 cPs.
 - **Pressure Rating** NP 25 at 20°C.
 - Impeller design handles up to 20% entrained gas.
- Ideal for pumping liquefied gas.**

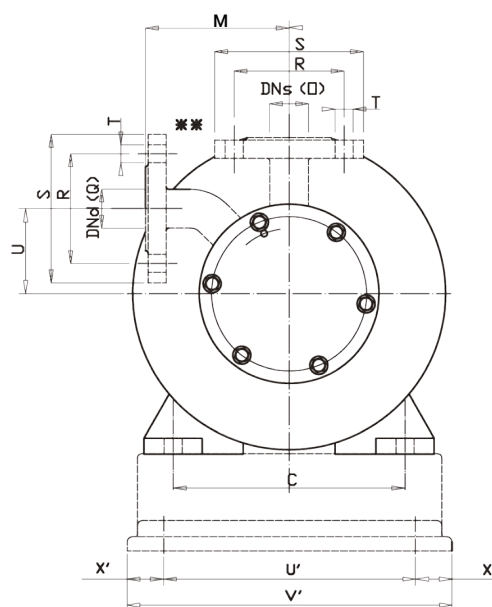
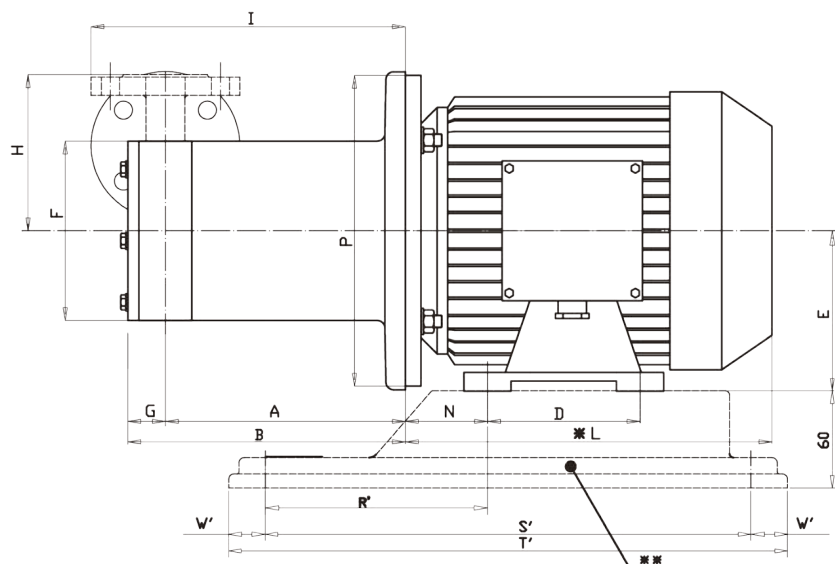
PERFORMANCE CURVES 50Hz - 2900 RPM



HTA TECHNICAL DATA

PUMP SIZE	MATERIAL	QMAX		HMAX		SUCTION CONNECTION	DISCHARGE CONNECTION	PUMP WEIGHT (kg)	SUITABLE MOTOR POWER (kW) 2900 rpm	MOTOR FLANGE AND FRAME
		50Hz (m³/h)	60Hz (USGPM)	50Hz (m/c)	60Hz (ft)					
HTA 25	AISI 316	2	10	32	140	3/4" FEMALE	3/4" FEMALE	7.5	1.1	80 - B3 / B5
HTA 37	AISI 316	3.5	19	43	180	3/4" FEMALE	3/4" FEMALE	7.5	1.1 2.2	80 - B3 / B5 90 - B3 / B5
HTA 49	AISI 316	4.7	25	58	235	1" FEMALE	1" FEMALE	14.2	2.2 3	90 - B5 100 - B5
HTA 78	AISI 316	7	36	76	320	1" FEMALE	1" FEMALE	19	3 4	100 - B5 112 - B5

HTA 25-37 SS / EM-T 25-37 SS (ATEX VERSION)



DIMENSIONS - mm -

PUMP TYPE	MOTOR FLANGE B3-B5		DIMENSIONS - mm -																BASEPLATE DIMENSIONS - mm -						
	SIZE	kW	A	B	C	D	E	F	G	H	I	*L	M	N	O	P	Q	U	R'	S'	T'	U'	V'	W'	Z'
HTA 25	802B	11	167	192	125	100	80	123	25	100	218	232	98	50	3/4" FEMALE	200	3/4" FEMALE	61	119	302	350	157	205	24	24
HTA 37	802B 90L2	11 22	167 177	192 202	125 140	100 125	80 90	123	25	100	220 230	232 280	98	50 56	3/4" FEMALE	200	3/4" FEMALE	61	119 130	302	350	157	205	24	24

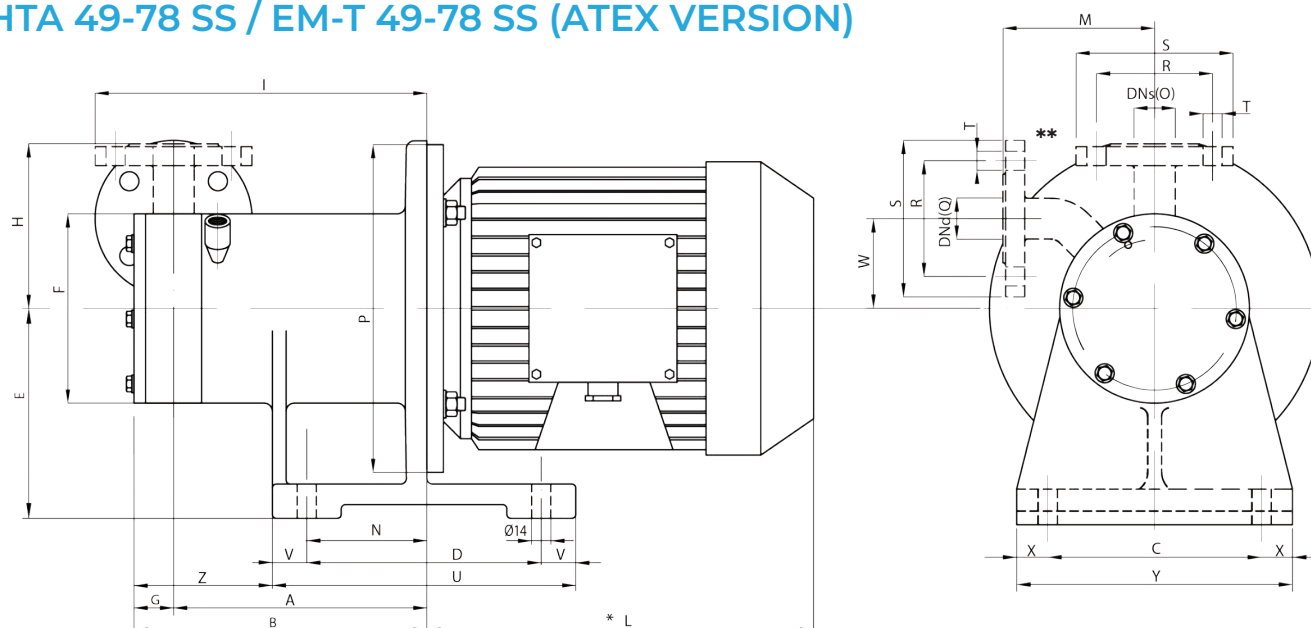
FLANGES DIMENSIONS - mm -

PUMP TYPE	R	S	T	DNs	DNd	
HTA 25-37	75	105	14	20	20	DN20 PN40

* Different according to the motor supplier. ** OPTIONAL UPON REQUEST: DIN or ANSI Flanges and Baseplates. NOTE: DIRECTION OF ROTATION IS COUNTER CLOCKWISE AS SEEN WHEN FACING THE MOTOR. PUMPS AVAILABLE THREADED OR FLANGED.



HTA 49-78 SS / EM-T 49-78 SS (ATEX VERSION)



DIMENSIONS - mm -

PUMP TYPE	MOTOR B5		DIMENSIONS - mm -																				
	SIZE	kW	A	B	C	D	E	F	G	H	I	*L	M	N	O	P	Q	U	V	W	X	Y	Z
HTA 49	90 L2	22	185	215	155	170	150	139	30	121	253	280	111	109	1"	200	1"	220	25	62.5	22.5	200	91
	100 L2	3	205	235							263	316			FEMALE	250	FEMALE						
HTA 78	100 L2	3	205	235	155	170	150	158	30	133	263	316	133	119	1"	250	1"	220	25	85.5	22.5	200	91
	112 M2	4										324			FEMALE		FEMALE						

FLANGES DIMENSIONS - mm -

PUMP TYPE	R	S	T	DNs	DNd	
HTA 49-78	85	115	14	25	25	DN25 PN40

* Different according to the motor supplier. ** OPTIONAL UPON REQUEST: DIN or ANSI Flanges.
NOTE: DIRECTION OF ROTATION IS COUNTER CLOCKWISE AS SEEN WHEN FACING THE MOTOR.
PUMPS AVAILABLE THREADED OR FLANGED.



GEMMECOTTI SRL

Via Po 23-25-27
20031 Cesate MILANO | ITALY
EUROPEAN UNION

Ph: +39 02.96460406
info@gemmecotti.com



www.gemmecotti.com

